



Blumaq, S.A.
Pol. Ind. Beñate, parcela 202
12600 - Vall de Uxo (CASTELLÓN)
T +34 964 697 030
F +34 964 697 040
E-mail mal@blumaq.com

Blumaq Almería
Pol. Ind. Rubra Sola, parcela H-20
04867 - Macael (ALMERÍA)
T +34 950 126 146
F +34 950 126 147
E-mail almeria@blumaq.es

Blumaq Barcelona
C/ Lobatona, 8 nave A-8
08440 - Viladecans (BARCELONA)
T +34 936 378 838
F +34 936 378 738
E-mail barcelona@blumaq.es

Blumaq Madrid
Pol. Ind. Finanzauto, C/Cuarzo, 13-15
28500 - Arganda del Rey (MADRID)
T +34 918 729 175
F +34 918 719 101
E-mail madrid@blumaq.es

Blumaq Ponferrada
Pol. Ind. de Campomaraya, sector II, parc. 18
24410 - Campomaraya (LEÓN)
T +34 987 455 052
F +34 987 455 504
E-mail leon@blumaq.es

Blumaq Tenerife
José Maldonado Dogour, 10
38009 - Santa Cruz de Tenerife (CANARIAS)
T +34 922 232 833
F +34 922 217 992
E-mail tenerife@blumaq.es

Blumasur, S.L. (Córdoba – Jaén)
Pol. de la Torrejilla
Príoing, Ingeniero Torres Quevedo, 3
14019 - Córdoba (CÓRDOBA)
T +34 957 420 034
F +34 957 420 017

Blumaq Alicante
Pol. Ind. Las Alayáas, parcela 89
03114 - Alicante (ALICANTE)
T +34 965 284 822
F +34 965 116 519
E-mail alicante@blumaq.es

Blumaq Asturias
Pol. Ind. Falmura, Avd. Guimaran, 19
33438 - Prandés (ASTURIAS)
T +34 985 990 910
F +34 985 990 911
E-mail asturias@blumaq.es

Blumaq Coruña
Pol. Ind. Bergondo, parcela 16
15165 - Bergondo (CORUÑA)
T +34 981 783 494
F +34 981 784 837
E-mail galicia@blumaq.es

Blumaq Mérida
Pol. Ind. El Prado, C/ Valencia, parcela 01-B10
06800 - Mérida (BADAJOZ)
T +34 924 371 066
F +34 924 371 479
E-mail merida@blumaq.es

Blumaq Sevilla
Pol. Ind. Menales, nave 4
41700 - Dos Hermanas (SEVILLA)
T +34 954 689 920
F +34 954 689 921
E-mail sevilla@blumaq.es

Blumaq Zaragoza
Pol. Ind. Malpica, calle F-39
50016 - Zaragoza (ZARAGOZA)
T +34 976 573 551
F +34 976 570 848
E-mail zaragoza@blumaq.es

José Luis Núñez S.L.
Pg. Artundaga - Etxe Aurreko, 13, 2G
48970 - Basauri (VIZCAYA)
T +34 944 262 732
F +34 944 403 108

Blumaq Pegas para Máquinas Industriais Lda.
Rua do Casalinho, Cova do Homem - Pousos
2410-201, Leiria
PORTUGAL
T +351 244 802 342
F +351 244 802 334
Email blumaqportugal@blumaq.com

Blumaq France SARL
240 rue Hélène Boucher BP217
78532 - Buc Cedex
FRANCE
T +33(0) 130 830 959
F +33(0) 139 566 030
E-mail blumaqfrance@blumaq.com

Blumaq Endüstryel Makina Ürünleri San. ve Tic. Ltd. Şti.
Denizli Sokak No:14/2
34841 Küçükyalı, Maltepe, İSTANBUL
TURKEY
T +90 216 3668567
F +90 216 3668567
E-mail blumaqturkey@blumaq.com

Blumaq Chile, S.A.
Avd. Colorado, 681
Quilicura-7501449, Santiago de Chile
CHILE
T +56 27 391 257
F +56 27 391 527
E-mail blumaqchile@blumaq.com

Blumaq Corp.
33166-Miami, FL
USA
T +1 3055 931 040
F +1 3055 930 831
E-mail blumaqcorp@blumaq.com

Blumaq Corp.
10839 Murdock Drive
Knoxville, TN 37932
USA
T +1 (865) 675 7600
F +1 (865) 675 7603
E-mail knoxville@blumaq.com

Campadell & Trentini S.R.L.
Via Emilia, 18
40056 Crespellano (Bo)
ITALIA
Tel. +39 051 733118
Fax: +39 051 731953
E-mail:
info@campadellentrentini.com
www.campadellentrentini.com

www.blumaq.com

Design: Incomedia
Photo: Roberto Blasco
Lighting assistant: Diógenes Serra
Production assistant: Carlos J. Vega
Models: Elena Cimarró y Andrea Cloban
Accessories for the months February, March and October: Ascension Latorre

CALENDAR 2011



JANUARY 2011



SUN

MON

TUE

WED

THU

FRI

SAT

1

New Year's Day

01	2	3	4	5	6	7	8
02	9	10	11	12	13	14	15
03	16	17	18	19	20	21	22
04	23	24	25	26	27	28	29
05	30	31					

DECEMBER

FEBRUARY

	1	2	3	4							
5	6	7	8	9	10	11	6	7	8	9	10
12	13	14	15	16	17	18	13	14	15	16	17
19	20	21	22	23	24	25	20	21	22	23	24
26	27	28	29	30	31		27	28			

FEBRUARY 2011



SUN

MON

TUE

WED

THU

FRI

SAT

05

1

2

3

4

5

06

6

7

8

9

10

11

12

07

13

14

15

16

17

18

19

08

20

21

22

23

24

25

26

09

27

28

JANUARY

MARCH

						1			1	2	3	4	5	
2	3	4	5	6	7	8		6	7	8	9	10	11	12
9	10	11	12	13	14	15		13	14	15	16	17	18	19
16	17	18	19	20	21	22		20	21	22	23	24	25	26
23	24	25	26	27	28	29		27	28	29	30	31		
30	31													

MARCH 2011



SUN

MON

TUE

WED

THU

FRI

SAT

09

1 2 3 4 5

10

6 7 8 9 10 11 12

11

13 14 15 16 17 18 19

12

20 21 22 23 24 25 26

13

27 28 29 30 31

FEBRUARY

1 2 3 4 5
6 7 8 9 10 11 12
13 14 15 16 17 18 19
20 21 22 23 24 25 26
27 28

APRIL

1 2
3 4 5 6 7 8 9
10 11 12 13 14 15 16
17 18 19 20 21 22 23
24 25 26 27 28 29 30

APRIL 2011



SUN

MON

TUE

WED

THU

FRI

SAT

13

1 2

14

3 4 5 6 7 8 9

15

10 11 12 13 14 15 16

16

17 18 19 20 21 22 23

17

24 25 26 27 28 29 30

MARCH

MAY

	1	2	3	4	5		1	2	3	4	5	6	7
6	7	8	9	10	11	12	8	9	10	11	12	13	14
13	14	15	16	17	18	19	15	16	17	18	19	20	21
20	21	22	23	24	25	26	22	23	24	25	26	27	28
27	28	29	30	31			29	30	31				

MAY 2011



SUN

MON

TUE

WED

THU

FRI

SAT

18

1

2

3

4

5

6

7

19

8

9

10

11

12

13

14

20

15

16

17

18

19

20

21

21

22

23

24

25

26

27

28

22

29

30

31

APRIL

JUNE

1 2
3 4 5 6 7 8 9
10 11 12 13 14 15 16
17 18 19 20 21 22 23
24 25 26 27 28 29 30

1 2 3 4
5 6 7 8 9 10 11
12 13 14 15 16 17 18
19 20 21 22 23 24 25
26 27 28 29 30

JUNE 2011



SUN

MON

TUE

WED

THU

FRI

SAT

22

1

2

3

4

23

5

6

7

8

9

10

11

24

12

13

14

15

16

17

18

25

19

20

21

22

23

24

25

26

26

27

28

29

30

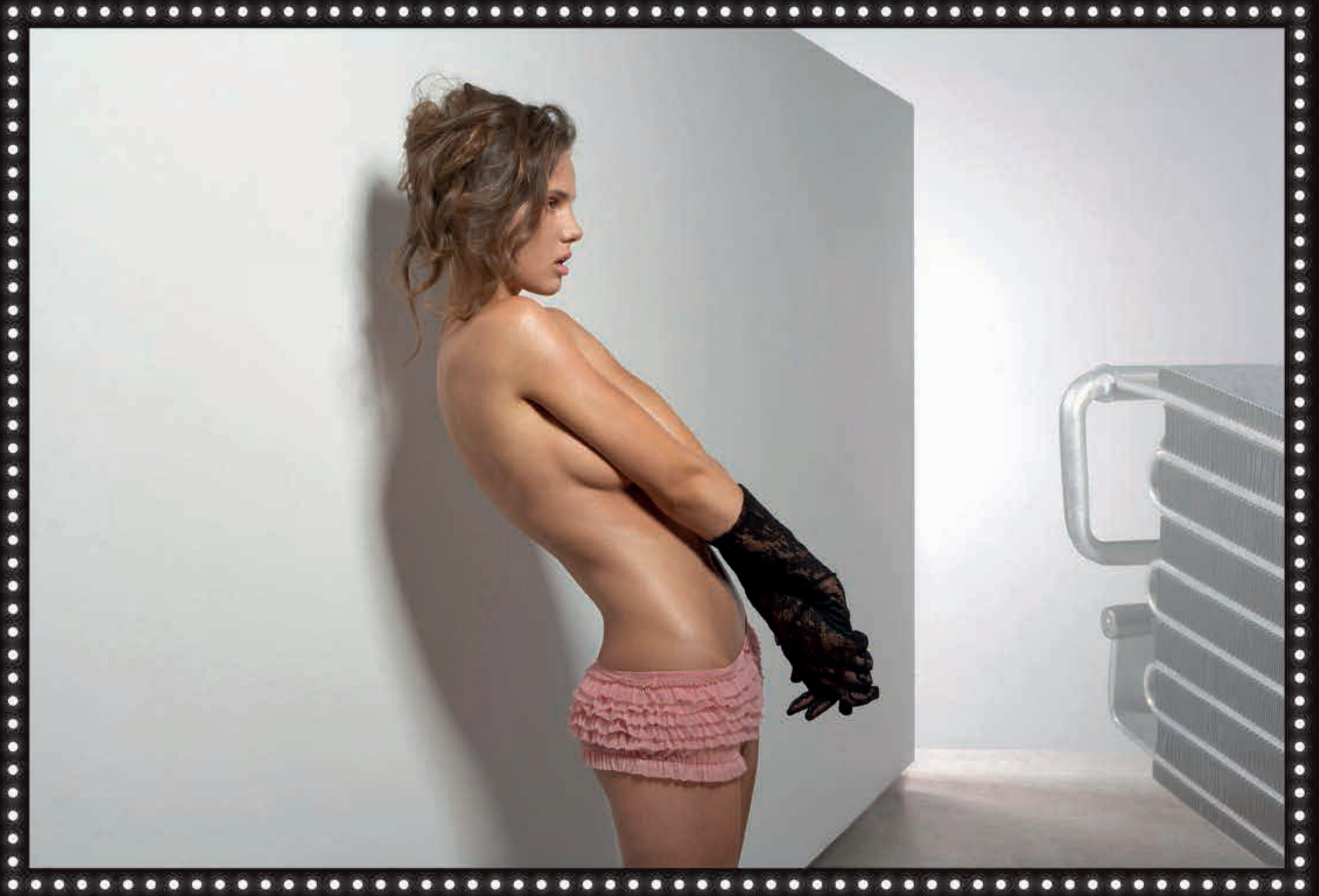
MAY

1 2 3 4 5 6 7
8 9 10 11 12 13 14
15 16 17 18 19 20 21
22 23 24 25 26 27 28
29 30 31

JULY

1 2
3 4 5 6 7 8 9
10 11 12 13 14 15 16
17 18 19 20 21 22 23
24 25 26 27 28 29 30
31

JULY 2011



SUN

MON

TUE

WED

THU

FRI

SAT

26

1

2

27

3

4

5

6

7

8

9

28

10

11

12

13

14

15

16

29

17

18

19

20

21

22

23

30

24

25

26

27

28

29

30

31

31

JUNE

AUGUST

1 2 3 4
5 6 7 8 9 10 11
12 13 14 15 16 17 18
19 20 21 22 23 24 25
26 27 28 29 30

1 2 3 4 5 6
7 8 9 10 11 12 13
14 15 16 17 18 19 20
21 22 23 24 25 26 27
28 29 30 31

AUGUST 2011



SUN

MON

TUE

WED

THU

FRI

SAT

31

1

2

3

4

5

6

32

7

8

9

10

11

12

13

33

14

15

16

17

18

19

20

34

21

22

23

24

25

26

27

35

28

29

30

31

JULY

SEPTEMBER

		1	2		
3	4	5	6	7	8
9	10	11	12	13	14
15	16	17	18	19	20
21	22	23	24	25	26
27	28	29	30	31	

				1	2	3
4	5	6	7	8	9	10
11	12	13	14	15	16	17
18	19	20	21	22	23	24
25	26	27	28	29	30	

SEPTEMBER 2011



SUN

MON

TUE

WED

THU

FRI

SAT

35

1 2 3

36

4 5 6 7 8 9 10

37

11 12 13 14 15 16 17

38

18 19 20 21 22 23 24

39

25 26 27 28 29 30

AUGUST

1 2 3 4 5 6
7 8 9 10 11 12 13
14 15 16 17 18 19 20
21 22 23 24 25 26 27
28 29 30 31

OCTOBER

1
2 3 4 5 6 7 8
9 10 11 12 13 14 15
16 17 18 19 20 21 22
23 24 25 26 27 28 29
30 31

OCTOBER 2011



SUN

MON

TUE

WED

THU

FRI

SAT

39

1

40

2

3

4

5

6

7

8

41

9

10

11

12

13

14

15

42

16

17

18

19

20

21

22

43

23

24

25

26

27

28

29

44

30

31

SEPTEMBER

NOVEMBER

		1	2	3		
4	5	6	7	8	9	10
11	12	13	14	15	16	17
18	19	20	21	22	23	24
25	26	27	28	29	30	

			1	2	3	4	5
6	7	8	9	10	11	12	
13	14	15	16	17	18	19	
20	21	22	23	24	25	26	
27	28	29	30				

NOVEMBER 2011



SUN

MON

TUE

WED

THU

FRI

SAT

44

1 2 3 4 5

45

6 7 8 9 10 11 12

46

13 14 15 16 17 18 19

47

20 21 22 23 24 25 26

48

27 28 29 30

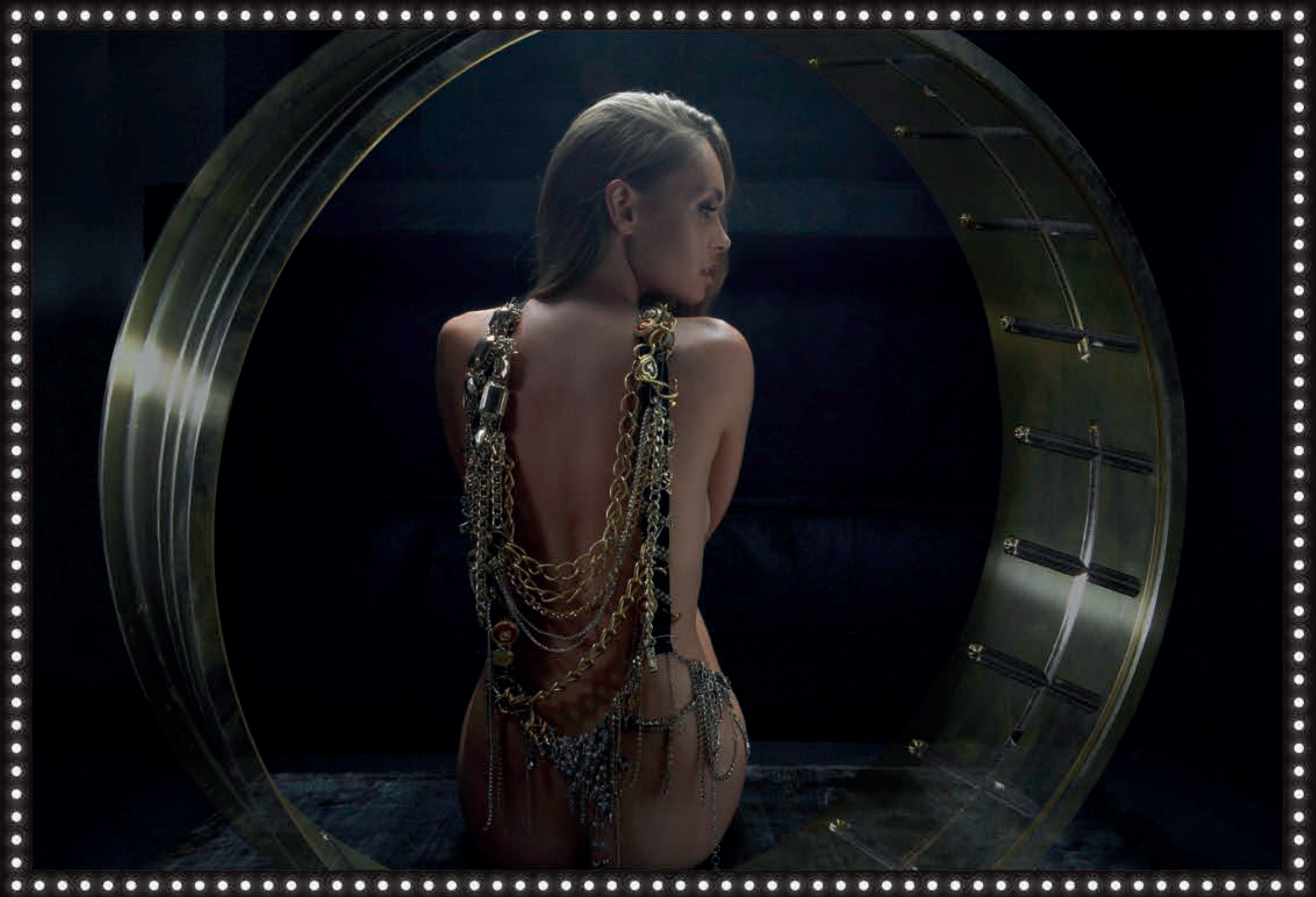
OCTOBER

DECEMBER

1
2 3 4 5 6 7 8
9 10 11 12 13 14 15
16 17 18 19 20 21 22
23 24 25 26 27 28 29
30 31

1 2 3
4 5 6 7 8 9 10
11 12 13 14 15 16 17
18 19 20 21 22 23 24
25 26 27 28 29 30 31

DECEMBER 2011



SUN

MON

TUE

WED

THU

FRI

SAT

48

1 2 3

49

4 5 6 7 8 9 10

50

11 12 13 14 15 16 17

51

18 19 20 21 22 23 24

52

25 26 27 28 29 30 31

Christmas Day

NOVEMBER

JANUARY

	1	2	3	4	5		1	2	3	4	5	6	7
6	7	8	9	10	11	12	8	9	10	11	12	13	14
13	14	15	16	17	18	19	15	16	17	18	19	20	21
20	21	22	23	24	25	26	22	23	24	25	26	27	28
27	28	29	30				29	30	31				

JANUARY

1
2 3 4 5 6 7 8
9 10 11 12 13 14 15
16 17 18 19 20 21 22
23 24 25 26 27 28 29
30 31

MARCH

1 2 3 4 5
6 7 8 9 10 11 12
13 14 15 16 17 18 19
20 21 22 23 24 25 26
27 28 29 30 31

MAY

1 2 3 4 5 6 7
8 9 10 11 12 13 14
15 16 17 18 19 20 21
22 23 24 25 26 27 28
29 30 31

JULY

1 2
3 4 5 6 7 8 9
10 11 12 13 14 15 16
17 18 19 20 21 22 23
24 25 26 27 28 29 30
31

SEPTEMBER

1 2 3
4 5 6 7 8 9 10
11 12 13 14 15 16 17
18 19 20 21 22 23 24
25 26 27 28 29 30

NOVEMBER

1 2 3 4 5
6 7 8 9 10 11 12
13 14 15 16 17 18 19
20 21 22 23 24 25 26
27 28 29 30

FEBRUARY

1 2 3 4 5
6 7 8 9 10 11 12
13 14 15 16 17 18 19
20 21 22 23 24 25 26
27 28

APRIL

1 2
3 4 5 6 7 8 9
10 11 12 13 14 15 16
17 18 19 20 21 22 23
24 25 26 27 28 29 30

JUNE

1 2 3 4
5 6 7 8 9 10 11
12 13 14 15 16 17 18
19 20 21 22 23 24 25
26 27 28 29 30

AUGUST

1 2 3 4 5 6
7 8 9 10 11 12 13
14 15 16 17 18 19 20
21 22 23 24 25 26 27
28 29 30 31

OCTOBER

1
2 3 4 5 6 7 8
9 10 11 12 13 14 15
16 17 18 19 20 21 22
23 24 25 26 27 28 29
30 31

DECEMBER

1 2 3
4 5 6 7 8 9 10
11 12 13 14 15 16 17
18 19 20 21 22 23 24
25 26 27 28 29 30 31

